



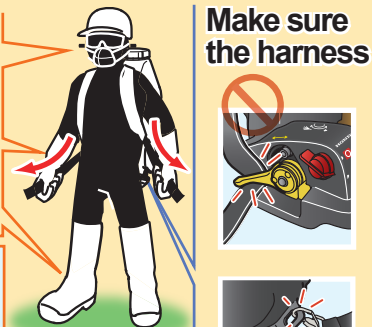
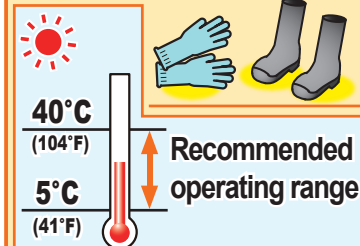
\* Read and understand the Owner's Manual before operating the power sprayer

## ▶ How to start

- 1 Check the engine oil**  
SAE 10W-30 MAX  
WJR2525T: 0.08 l  
WJR4025T: 0.10 l
- 2 Pressure dial**  
LOW
- 3 Shut-off valve**  
Close
- 4 Choke**  
Cold ON, Hot OFF
- 5 Feed**
- 6 Throttle**  
SLOW
- 7 Switch**  
ON
- 8 Start**
- 9 (Choke OFF)**

## ⚠ Safety Precaution

**Wear protectors**  
(Water proof)



**Obey the Chemicals instruction and law**



**Do not direct the nozzle towards anyone**



**Do not use against the direction of the wind**



**Do not walk backwards**



**Do not walk on steep slope**



## How to stop 3 → 6 → 7

### ▶ Spraying

- 1 Shut-off valve**
- 2 Adjust**  
PRESSURE, SPREAD RANGE, SPEED

### ▶ After spraying

- 1 Drain chemicals**
- 2 Wash by water**  
2~3 minutes

