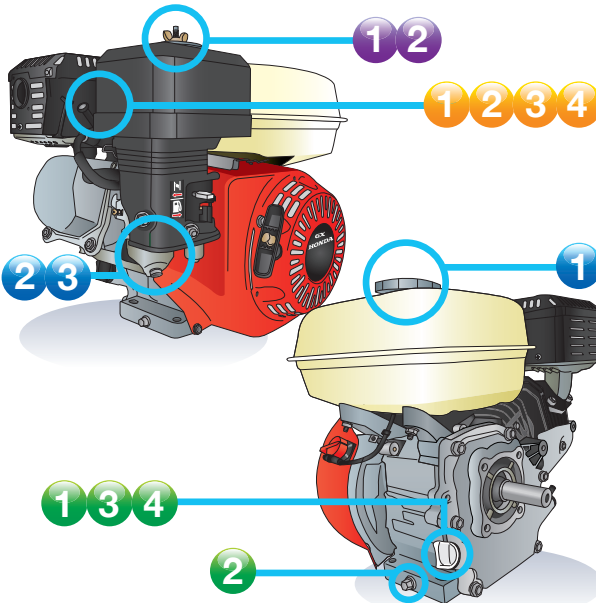




Maintenance Schedule

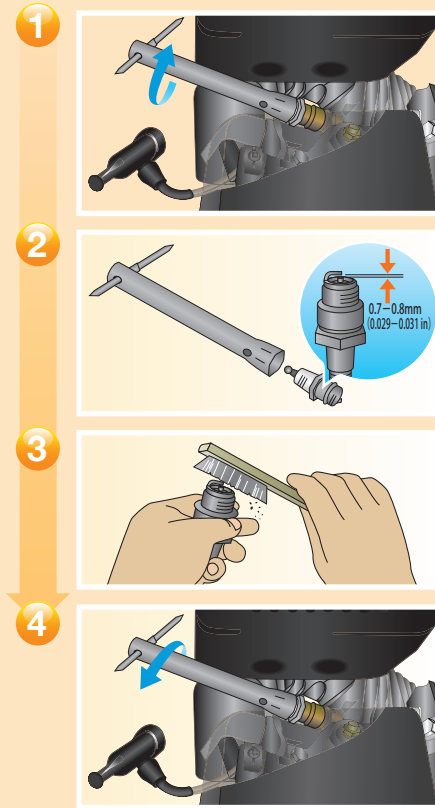
Item	Regular service Period	Before each use	First month or 20Hours	Every 3 months or 50Hours	Every 6 months or 100Hours	Every year or 300Hours
Engine Oil		● check fill/add	⊗ replace		⊗ replace	
Air Cleaner		● check		■*	■*	
Spark Plug					▲ check readjust	⊗ replace
Spark arrester (applicable types)					■ clean	
Fuel filtration cup					■ clean	
Idle speed						▲ check readjust
Valve Clearance						▲ check readjust
Combustion chamber				■ Every 500Hours		
Fuel tank and filter					■ clean	
Fuel tube						■ Every 2years

* Clean the aircleaner when used in dusty areas every 10hours or once a day

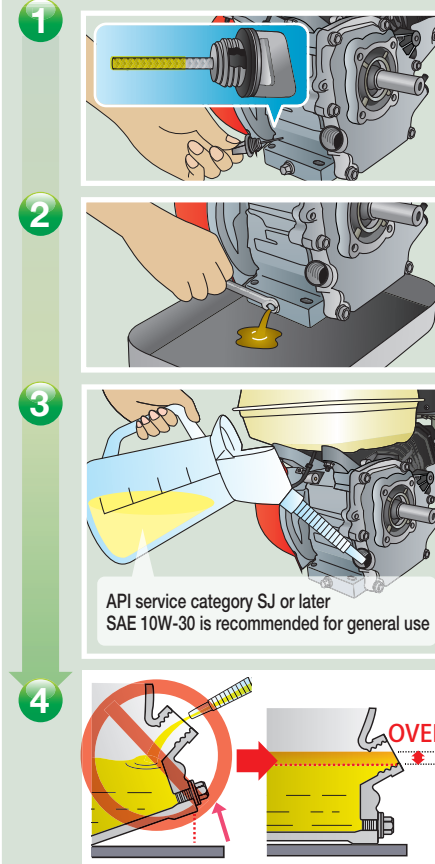


* Read and understand the Owner's Manual before operating the engine.

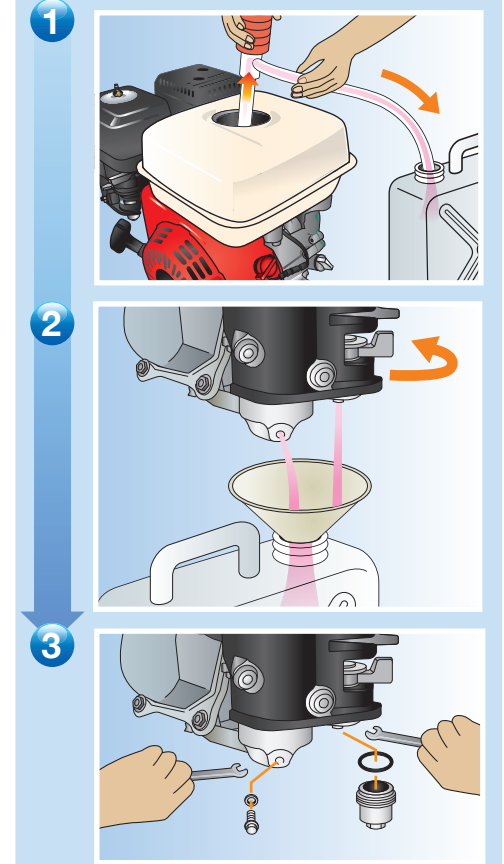
▶ Spark Plug



▶ Engine Oil



▶ Prolonged storage



▶ Air Cleaner Element

